

# *PRICOM* *Button Board*

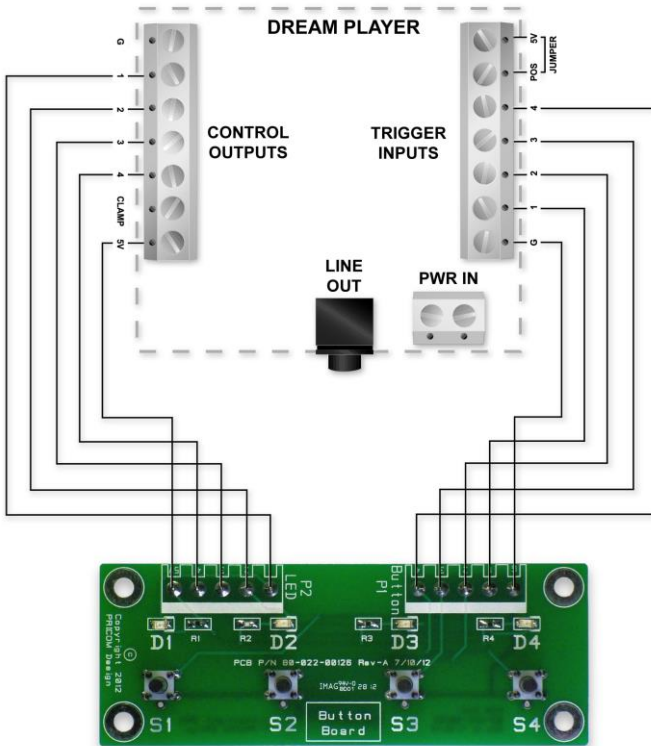
## Quick Start Guide

Version 2.0  
Copyright ©2018 PRICOM Design

# 1 Operation

Thank you for your purchase of the PRICOM Button Board. The Button Board functions just like its name implies. It is a board with buttons on it. The Button Board is unique from other PRICOM products in that the connections are made using terminal strips on the back of the board and the input buttons are on the front. This allows for optimum mounting capabilities. The board measures 4 inches (102mm) long by 1 ½ inches (38mm) wide with a clearance of ½ inch (13mm) from top of the board to top of the buttons.

**Figure 1 - Connection Diagram**



## 2 Connections

---

### Trigger Control Terminal

**Button (P1):** All four button triggers share a common ground that all connect at the “G” labeled position on the “Button” terminal strip. The other positions labeled 1,2,3,4 directly correspond to the on-board buttons labeled S1, S2, S3, S4.

### LED Indicator Terminal

**LED (P2):** The Button Board also has four on-board LED indicators, power is supplied to the LED’s using the common 5V position on the LED terminal strips. As the label indicates 5 Volts DC is the recommended supply power. The other positions, 1,2,3,4 again directly correspond to the LED’s labeled D1, D2, D3, and D4.

## 3 Using with a Dream Player

---

The connections of the Button Board are designed to specifically correspond to connections on the Dream Player MK2 and Dream Player PRO allowing for quick and easy installation. However, the Button Board may be used with other devices in any scenarios that require a simple contact closure.

The diagram in this manual shows a quick and easy overview of how and where to connect the terminal strips on the button board to the positions on the Dream Player. The Connections are a simple matter of matching the labels of the Button Board to those of the Dream Player, connecting G to G, 1 to 1 and so on.

**Please Note:** One feature of the Dream Player is its ability to supply power to trigger devices; the Button Board does not require this feature, so it is necessary to wire a jumper between the 5V and Clamp positions of the Trigger Input Terminal Strip. If you do not have this Jumper the Board WILL NOT work.

## 4 Standard Operation

---

When combining the Button Board with a Dream Player in a normal configuration you should see the following: When you press one of the buttons on the Button Board it will trigger an audio file on the Dream Player. While this Audio file is playing, the Control Output of the Dream Player will be active for that track and only that track. This will be apparent by the illumination of the on-board LED of the Button Board for that equivalent track. For example, if you press Button 1 (S1), LED (D1) will light so long as the trigger output of the Dream Player is Active for that track.



## 5 Support

---

If you have any questions, problems, concerns or just need assistance with the general use of your PRICOM Button Board, please contact us and we will do our best to get you up and running as quickly as possible.

If you are a visual learner, How To videos are available on our website.

PRICOM Design  
2755 Slocum Rd  
Peyton, CO 80831  
[www.pricom.com](http://www.pricom.com)  
[info@pricom.com](mailto:info@pricom.com)

